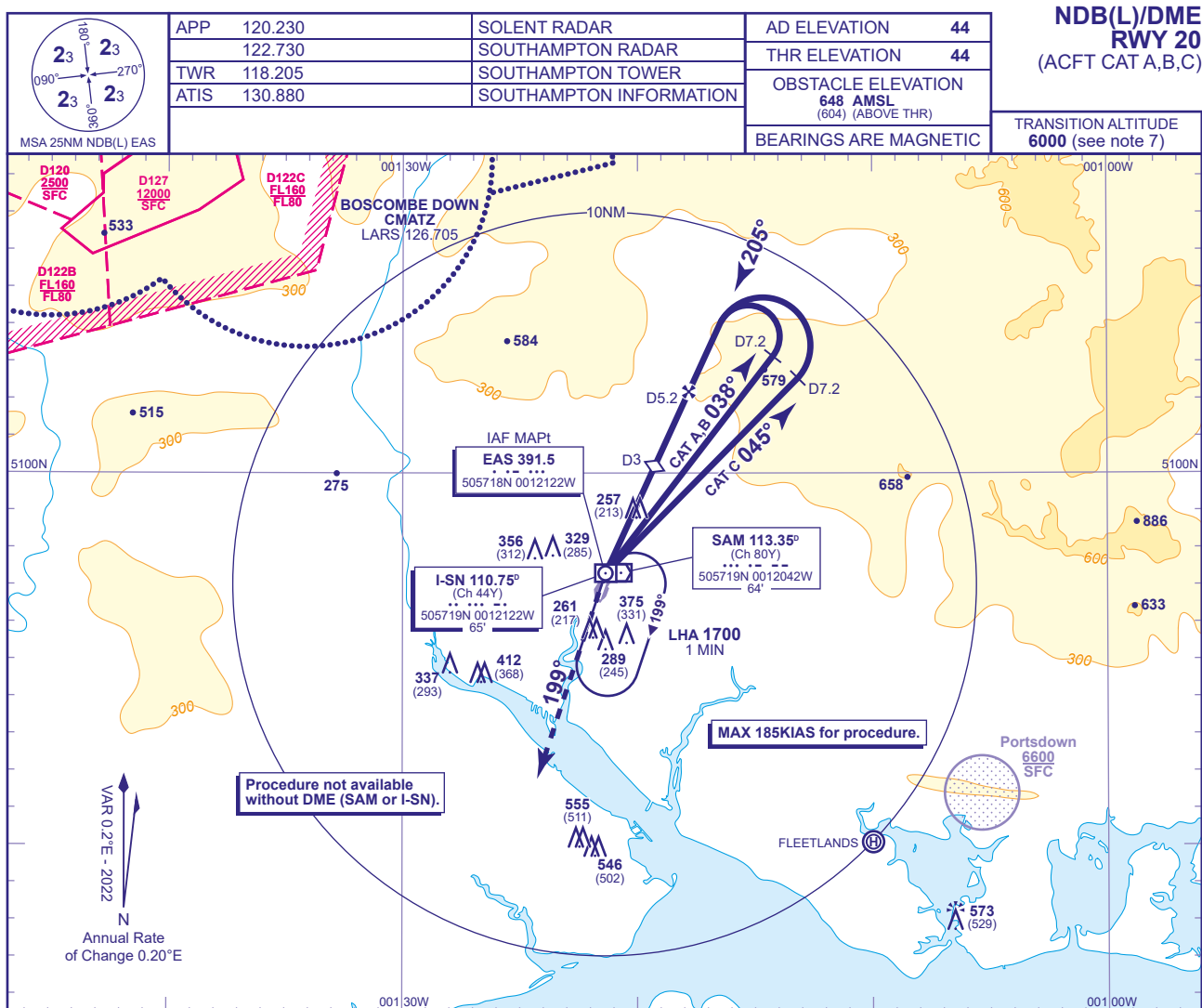


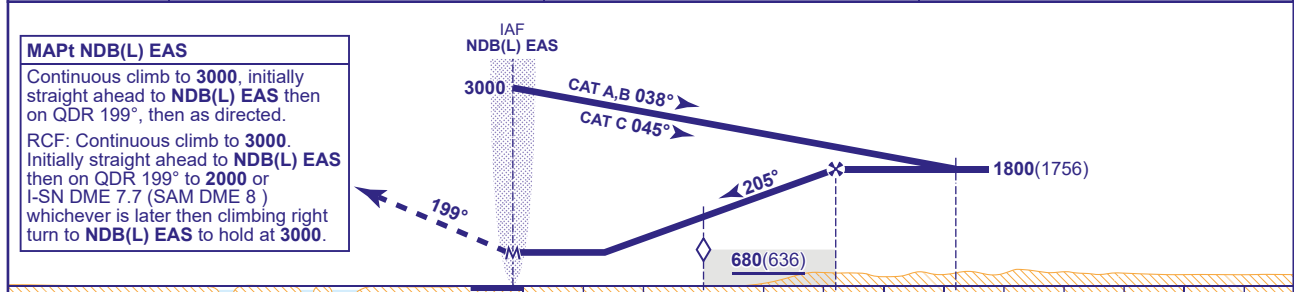
APPROACH CHART - ICAO

SOUTHAMPTON
NDB(L)/DME
RWY 20
 (ACFT CAT A,B,C)



RECOMMENDED PROFILE Gradient 5.41%, 328FT/NM

DME I-SN	4	3 (SDF)	2
ALT(HGT)	1410(1366)	1080(1036)	750(706)



DME I-SN zero ranged to THR RWY 20					0	D3	D5.2	D7.2				
Aircraft Category		A	B	C		Rate of descent	G/S KT	160	140	120	100	80
OCA (OCH)	Procedure	560(516)	560(516)	560(516)			FT/MIN	880	770	660	550	440
VM(C)OCA (OCH AAL)	Total Area	680(636)	700(656)	890(846)								

- NOTE**
- Lowest altitude to commence procedure from hold is 2000.
 - FAT offset 6° from RWY CL and intersects CL 0.8NM (I-SN DME 0.8) before THR.
 - DME SAM is situated 0.3NM east of THR RWY 20.
 - DME SAM may be substituted for DME I-SN if required. There are no changes to DME distances when DME SAM is used.
 - Due to controlled airspace constraints, aircraft may temporarily leave controlled airspace in the base turn. Aircraft being radar vectored to the FAT may not be provided a period of level flight immediately prior to crossing the FAF.
 - Aircraft will normally be required to hold not lower than 2000.
 - Outside the Solent CTA notified hours of operation the Transition Altitude is 3000.

CHANGE (12/25): BOSCOMBE FREQUENCY.

AERO INFO DATE 08 SEP 25

AD 2-EGHI-8-9